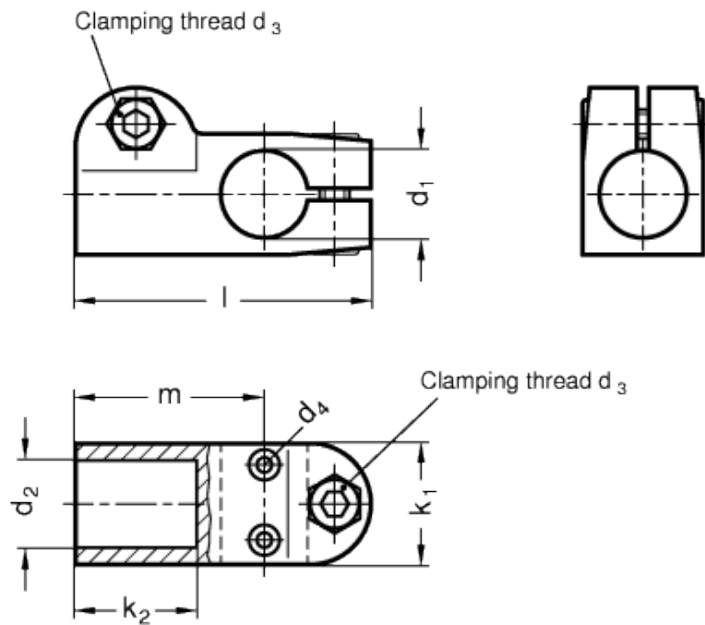


# GN 191.1-NI

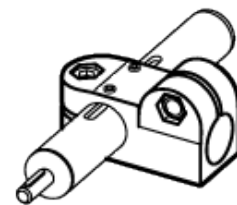
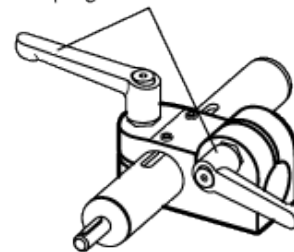
T-shaped clamping connectors for linear actuators



INOX  
Stainless Steel



Adjustable  
clamping lever GN 911



## technical informations

### Material

AISI CF-8 stainless steel NI, matte shot-blasted.

### Clamping screws

Identification no. 2: with two AISI 304 stainless steel-clamping screws DIN 912 and nuts DIN 985.

### Assembly

The standard clamping bolts are socket cap screws DIN 912, supplied assembled. They can be replaced by clamping kits GN 911 (description see table of dimensions).

### Features and applications

Linear actuator connectors GN 191.1-NI are normally supplied only in connection with a mounted linear actuator and for function control.

By means of the clamping screw on the guide bore  $d_1$  the movement can either be set or the linear actuator connector can be clamped (after setting of final adjustment).

### Accessories

- Tubings [GN 990](#).
- Linear actuators GN 291.
- Linear actuators GN 292.
- Clamping kits [GN 911](#) (clamping handles GN 300.1 with distance bushing).

Standard Elements	Main dimensions											Clamping kits	Weight
Description	$d_1$ Bore without slider bush	$d_1$ Bore with slider bush	$d_2$	$d_3$	$d_4$	$k_1$	$k_2$	l	m	For $d_3$		g	
GN 191.1-G18-B18-2-NI	-	G 18	B 18	M 6	M 3	25	25	61	39	GN 911-M6-22		235	



STANDARD MACHINE ELEMENTS WORLDWIDE